



CHUCK AUTOCENTRANTE UNIVERSAL TMX



TMX

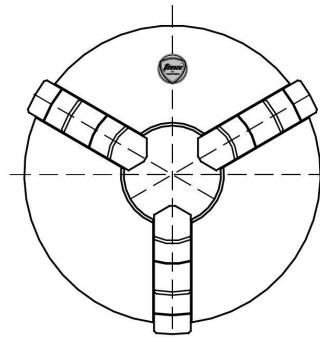
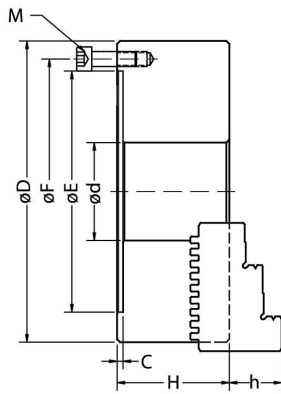


CHUCK UNIVERSAL DE 3 MORDAZAS ATORNILLABLES CON CUERPO DE FUNDICIÓN

Código	Diámetro del Chuck D	Medida	Máx. RPM	Peso Lbs.
3-800-0600	6 1/4"	160 mm	3000	19.4
3-800-0800	8"	200 mm	2500	34
3-800-1000	10"	250 mm	2000	57

CHUCK UNIVERSAL DE 3 MORDAZAS SÓLIDAS CON CUERPO DE FUNDICIÓN

Código	Diámetro del Chuck D	Medida	Máx. RPM	Peso Lbs.
3-810-0600	6 1/4"	160 mm	3000	19.4
3-810-0800	8"	200 mm	2500	34
3-810-1000	10"	250 mm	2000	57
3-810-1200	12 1/2"	315 mm	1500	104



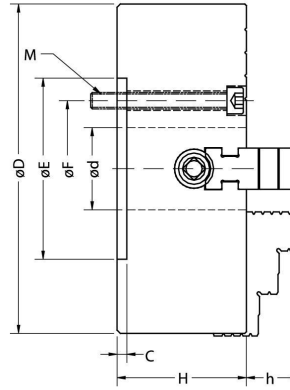
DIMENSIONES PRINCIPALES

Código	Código	Diámetro del Chuck D	E	F	d	H	h
3-800-0600	3-810-0600	6 1/4"	4.92	5.51	1.77	2.55	1.73
3-800-0800	3-810-0800	8"	6.29	6.92	2.55	2.95	1.85
3-800-1000	3-810-1000	10"	7.87	8.81	3.14	3.14	2.14
-	3-810-1200	12 1/2"	10.23	11.25	4.09	3.54	2.30



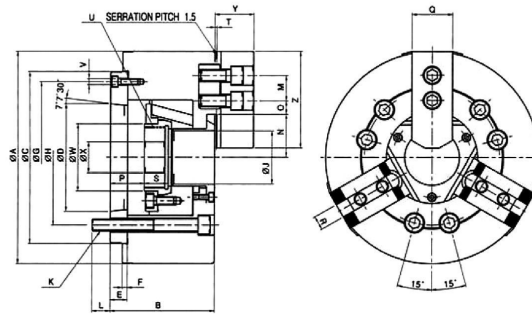
CHUCK INDEPENDIENTE / HIDRÁULICO TMX

TMX



CHUCK INDEPENDIENTE DE 4 MORDAZAS SOLIDAS CUERPO DE FUNDICIÓN

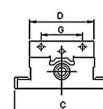
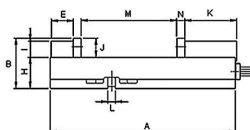
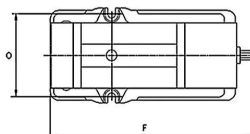
Código	Diámetro del Chuck D	Mérida	E	F	d	H	h	C	Máx. RPM	Peso Lbs.
3-850-0600	6 1/4"	160 mm	3.25	2.75	1.77	2.95	.78	0.19	2500	17
3-850-0800	8"	200 mm	4.33	3.25	2.20	3.14	1.58	0.23	2000	32
3-850-1000	10"	250 mm	5.90	4.12	2.95	3.54	1.58	0.23	1600	51
3-850-1200	12 1/2"	320 mm	6.88	5.25	3.74	3.74	1.96	0.23	1200	88
3-850-1600	15 3/4"	400 mm	7.87	6.74	4.92	4.13	1.96	0.31	1000	121
3-850-2000	20"	500 mm	10.62	9.25	6.29	4.72	2.34	0.31	800	225



CHUCK HIDRÁULICO ACOPLAMIENTO A-2 INCLUIDO

Código	Diámetro del Chuck	Mérida	Nariz del Husillo	Paso de Barra	Carr. de Mordaza	Carr. de Disco	Máx. Diá. de Sujeción	Min. Diá. de Sujeción	Fuerza Máx. Permissible de Entrada	Fuerza Máx. de Agarre Estático	Máx. RPM	Peso Lbs.	Momento de Inercia
3-781-0650	6"	160 mm	A2-5	1.81	0.21	0.51	6.65	0.51	5512	14167	6000	30.2	0.05
3-781-0860	8"	200 mm	A2-6	2.04	0.29	0.70	8.26	0.43	8995	21159	5000	52	0.14
3-781-1080	10"	250 mm	A2-8	3.03	0.33	0.78	10	1.22	11244	28088	4200	88.2	0.26

PRENSA Y CONTRAPLATO "TMX"



PRENSA PARA CNC FIJA TIPO "KURT"

Código	A	B	C	D	E	F	G	H	I	J	K	L	M	N	O	Máx. Sujeción Lbs.	Peso Lbs.
3-220-006	17	4.62	9.25	5.98	2.04	19.09	3.87	2.8" +/-0.0005"	1.49	1.75	4.84	0.68	7.55	0.79	7.64	8200	79
3-220-0068	17.2	4.62	8.75	5.98	2.04	18.93	3.87		1.49	1.75	4.84	0.68	8.89	0.79	7.64	9840	80



PLATO DE ACOPLAMIENTO

Código	Diámetro del Chuck D	Diá. de Perno	Rosca	Nariz	Nº de Pernos	Peso Lbs.
3-878-064	6 1/4"	5/8	M10 x 1	D1-4	3	9.5
3-878-084	8"	5/8	M10 x 1	D1-4	3	15.4
3-878-086	8"	7/8	M16 x 1.5	D1-6	6	15.4
3-878-106	10"	7/8	M16 x 1.5	D1-6	6	24.3
3-878-108	10"	1	M20 x 1.5	D1-8	6	39.7
3-878-126	12 1/2"	7/8	M16 x 1.5	D1-6	6	39.7

TMX



BROCAS A.V.



TMX

BROCA ZANCO CÓNICO

Código	Diámetro	Zanco Cónico	Largo Total
5-190-200	5/8"	CM 2	8-37/64"
5-190-205	41/64"	CM 2	8-25/32"
5-190-210	21/32"	CM 2	8-25/32"
5-190-215	43/64"	CM 2	8-31/32"
5-190-220	11/16"	CM 2	8-31/32"
5-190-221	45/64"	CM 2	8-31/32"
5-190-222	23/32"	CM 2	9-11/64"
5-190-223	47/64"	CM 2	9-11/64"
5-190-225	3/4"	CM 2	9-3/8"
5-190-227	49/64"	CM 2	9-3/8"
5-190-230	25/32"	CM 2	9-3/8"
5-190-235	51/64"	CM 2	9-9/16"
5-190-240	13/16"	CM 2	9-9/16"
5-190-245	53/64"	CM 2	9-9/16"
5-190-250	27/32"	CM 2	9-49/64"
5-190-255	55/64"	CM 2	9-49/64"
5-190-260	7/8"	CM 2	9-49/64"
5-190-265	57/64"	CM 2	9-61/64"
5-190-270	29/32"	CM 2	9-61/64"
5-190-275	59/64"	CM 3	10-55/64"
5-190-280	15/16"	CM 3	11-1/16"
5-190-285	61/64"	CM 3	11-1/16"
5-190-290	31/32"	CM 3	11-1/16"
5-190-295	63/64"	CM 3	11-1/16"
5-190-300	1"	CM 3	11-1/4"
5-190-301	1-1/64"	CM 3	11-1/4"
5-190-302	1-1/32"	CM 3	11-1/4"
5-190-304	1-1/16"	CM 3	11-29/64"
5-190-306	1-3/32"	CM 3	11-29/64"
5-190-307	1-7/64"	CM 3	11-21/32"
5-190-308	1-1/8"	CM 3	11-21/32"
5-190-309	1-9/64"	CM 3	11-21/32"
5-190-310	1-5/32"	CM 3	11-21/32"
5-190-312	1-3/16"	CM 3	11-27/32"
5-190-316	1-1/4"	CM 3	12-3/64"
5-190-320	1-5/16"	CM 4	13-9/64"
5-190-324	1-3/8"	CM 4	13-11/32"
5-190-328	1-7/16"	CM 4	13-35/64"
5-190-332	1-1/2"	CM 4	13-47/64"
5-190-340	1-5/8"	CM 4	13-15/16"
5-190-348	1-3/4"	CM 4	14-1/8"
5-190-356	1-7/8"	CM 4	14-17/32"
5-190-400	2"	CM 4	14-23/32"

BROCA ZANCO DE 1/2"

Código	Tamaño	Equivalente Decimal
5-166-012	17/32"	.5312
5-166-014	35/64"	.5469
5-166-016	9/16"	.5625
5-166-018	37/64"	.5781
5-166-020	19/32"	.5938
5-166-022	39/64"	.6094
5-166-024	5/8"	.6250
5-166-026	41/64"	.6406
5-166-028	21/32"	.6562
5-166-030	43/64"	.6719
5-166-032	11/16"	.6875
5-166-034	45/64"	.7031
5-166-036	23/32"	.7188
5-166-038	47/64"	.7344
5-166-040	3/4"	.7500
5-166-042	49/64"	.7656
5-166-044	25/32"	.7812
5-166-046	51/64"	.7969
5-166-048	13/16"	.8125
5-166-050	53/64"	.8281
5-166-052	27/32"	.8438
5-166-054	55/64"	.8594
5-166-056	7/8"	.8750
5-166-058	57/64"	.8906
5-166-060	29/32"	.9062
5-166-062	59/64"	.9219
5-166-064	15/16"	.9375
5-166-066	61/64"	.9531
5-166-068	31/32"	.9688
5-166-070	63/64"	.9844
5-166-072	1"	1.0000
5-166-074	1.1/64"	1.0156
5-166-076	1.1/32"	1.0312
5-166-080	1.1/16"	1.0625
5-166-086	1.7/64"	1.1094
5-166-088	1.1/8"	1.1250
5-166-090	1.9/64"	1.1406
5-166-092	1.5/32"	1.1562
5-166-096	1.3/16"	1.1875
5-166-104	1.1/4"	1.2500
5-166-108	1.9/32"	1.2812
5-166-112	1.5/16"	1.3125
5-166-120	1.3/8"	1.3750
5-166-128	1.7/16"	1.4375
5-166-136	1.1/2"	1.5000



BROCA DE CENTROS 60°

Código	Tamaño	Diá. Cuerpo	Diá. Broca	Largo Broca	Largo Total
5-600-010	1"	1/8"	3/64	3/64	1-1/4
5-600-015	2"	3/16"	5/64	5/64	1-7/8
5-600-020	3"	1/4"	7/64	7/64	2
5-600-025	4"	5/16"	1/8	1/8	2-1/8
5-600-030	5"	7/16"	3/16	3/16	2-3/4
5-600-035	6"	1/2"	7/32	7/32	3

RIMAS ZANCO RECTO A.V. / CORTADOR VERTICAL A.V.



RIMAS ZANCO RECTO A.V.



CORTADOR VERTICAL A.V.



RIMA FRACCIONAL				
Código	Diámetro	Diá. Zanco	Largo Filo	Largo Total
5-015-001	1/16"	.0625	1/2	2 1/2
5-015-005	1/8"	.1190	7/8"	3-1/2"
5-015-015	5/32"	.1510	1"	4"
5-015-025	3/16"	.1805	1-1/8"	4-1/2"
5-015-045	1/4"	.2405	1-1/2"	6"
5-015-065	5/16"	.2807	1-1/2"	6"
5-015-085	3/8"	.3120	1-3/4"	6"
5-015-105	7/16"	.3745	1-3/4"	7"
5-015-125	1/2"	.4370	2"	8"
5-015-145	9/16"	.4370	2"	8"
5-015-165	5/8"	.5620	2-1/4"	9"
5-015-175	21/32"	.5620	2-1/4"	9"
5-015-185	11/16"	.5620	2-1/4"	9"
5-015-205	3/4"	.6245	2-1/2"	9-1/2"
5-015-225	13/16"	.6245	2-1/2"	9-1/2"
5-015-245	7/8"	.7495	2-5/8"	10"
5-015-265	15/16"	.7495	2-5/8"	10"
5-015-285	1"	.8745	2-3/4"	10-1/2"
5-015-305	1.1/8	.8745	2-7/8	11
5-015-315	1.3/16	.9995	2-7/8	11
5-015-320	1.1/4	.9995	3	11-1/2
5-015-330	1.3/8	.9995	3-1/4	12
5-015-340	1.1/2	1.2495	3-1/2	12-1/2

RIMA MILIMÉTRICA				
Código	Diámetro mm	Diá. Zanco mm	Largo Filo mm	Largo Total mm
5-019-040	3	3	15	61
5-019-055	4	4	19	75
5-019-065	5	5	23	86
5-019-070	6	5.6	26	93
5-019-075	7	7.1	31	109
5-019-080	8	8	33	117
5-019-085	9	9	36	125
5-019-090	10	10	38	133
5-019-095	11	10	41	142
5-019-100	12	10	44	151
5-019-105	13	10	44	151
5-019-110	14	12.5	47	160
5-019-115	15	12.5	50	162
5-019-120	16	12.5	52	170
5-019-125	17	14	54	175
5-019-130	18	14	56	182
5-019-135	19	16	58	189
5-019-140	20	16	60	195
5-019-150	22	18	60	225
5-019-160	24	20	60	240

CORTADOR VERTICAL 4 F. PLANO				
Código	Diá. de Corte	Diá. de Zanco	Largo de Corte	Largo Total
5-305-005	1/8"	3/8"	3/8"	2-5/16"
5-305-010	5/32"	3/8"	3/8"	2-5/16"
5-305-015	3/16"	3/8"	1/2"	2-3/8"
5-305-020	7/32"	3/8"	5/8"	2-7/16"
5-305-025	1/4"	3/8"	5/8"	2-7/16"
5-305-035	5/16"	3/8"	3/4"	2-1/2"
5-305-045	3/8"	3/8"	3/4"	2-1/2"
5-305-055	7/16"	3/8"	1"	2-11/16"
5-305-065	1/2"	3/8"	1"	2-11/16"
5-305-070	1/2"	1/2"	1-1/4"	3-1/4"
5-305-080	9/16"	1/2"	1-3/8"	3-3/8"
5-305-085	5/8"	1/2"	1-3/8"	3-3/8"
5-305-095	3/4"	1/2"	1-5/8"	3-5/8"
5-305-104	7/8"	1/2"	1-7/8"	4"
5-305-115	1"	1/2"	1-7/8"	4"
5-305-125	5/8"	5/8"	1-5/8"	3-3/4"
5-305-135	3/4"	5/8"	1-5/8"	3-3/4"
5-305-160	1"	5/8"	1-7/8"	4"
5-305-170	3/4"	3/4"	1-5/8"	3-3/4"
5-305-185	7/8"	3/4"	1-7/8"	4-1/8"
5-305-200	1"	3/4"	1-7/8"	4-1/8"
5-305-245	1"	7/8"	1-7/8"	4-1/8"
5-305-255	1-1/4"	7/8"	2"	4-1/4"
5-305-265	1"	1"	2"	4-1/2"
5-305-285	1.1/2"	1"	2"	4-1/2"

CORTADOR VERTICAL 6 F. PLANO				
Código	Diá. de Corte	Diá. de Zanco	Largo de Corte	Largo Total
5-305-105	7/8"	1/2"	1-7/8"	4"
5-305-120	1"	1/2"	1-7/8"	4"
5-305-150	7/8"	5/8"	1-7/8"	4"
5-305-165	1"	5/8"	1-7/8"	4"
5-305-175	3/4"	3/4"	1-5/8"	3-3/4"
5-305-190	7/8"	3/4"	1-7/8"	4-1/8"
5-305-205	1"	3/4"	1-7/8"	4-1/8"
5-305-215	1.1/8"	3/4"	2"	4-1/4"
5-305-220	1.3/16"	3/4"	2"	4-1/4"
5-305-225	1.1/4"	3/4"	2"	4-1/4"
5-305-230	1.3/8"	3/4"	2"	4-1/2"
5-305-235	1.1/2"	3/4"	2"	4-1/2"
5-305-250	1.1/8"	7/8"	2"	4-1/4"
5-305-267	1"	1"	2"	4-1/2"
5-305-270	1.1/8"	1"	2"	4-1/2"
5-305-275	1.1/4"	1"	2"	4-1/2"
5-305-280	1.3/8"	1"	2"	4-1/2"

TMX



CORTADOR VERTICAL A.V.

TMX



CORTADOR VERTICAL 2 F. PLANO

Código	Diá. de Corte	Diá. de Zanco	Largo de Corte	Largo Total
5-300-005	1/8"	3/8"	3/8"	2-5/16"
5-300-010	5/32"	3/8"	7/16"	2-5/16"
5-300-015	3/16"	3/8"	7/16"	2-5/16"
5-300-025	1/4"	3/8"	1/2"	2-5/16"
5-300-035	5/16"	3/8"	9/16"	2-5/16"
5-300-045	3/8"	3/8"	9/16"	2-5/16"
5-300-055	7/16"	3/8"	13/16"	2-1/2"
5-300-070	1/2"	1/2"	1"	3"
5-300-075	9/16"	1/2"	1-1/8"	3-1/8"
5-300-080	5/8"	1/2"	1-1/8"	3-1/8"
5-300-090	3/4"	1/2"	1-5/16"	3-1/16"
5-300-100	7/8"	1/2"	1-1/2"	3-5/8"
5-300-105	15/16"	1/2"	1-1/2"	3-5/8"
5-300-115	5/8"	5/8"	1-5/16"	3-7/16"
5-300-125	3/4"	5/8"	1-5/16"	3-7/16"
5-300-135	7/8"	5/8"	1-1/2"	3-5/8"
5-300-145	1"	5/8"	1-1/2"	3-5/8"
5-300-155	3/4"	3/4"	1-5/16"	3-7/16"
5-300-165	7/8"	3/4"	1-1/2"	3-3/4"
5-300-175	1"	3/4"	1-1/2"	3-3/4"
5-300-210	7/8"	7/8"	1-1/2"	3-3/4"



CORTADOR VERT. 4 FILOS PLANO LARGO

Código	Diá. de Corte	Diá. de Zanco	Largo de Corte	Largo Total
5-315-005	1/4"	3/8"	1-1/4"	3-1/16"
5-315-010	5/16"	3/8"	1-3/8"	3-1/8"
5-315-015	3/8"	3/8"	1-1/2"	3-1/4"
5-315-020	7/16"	1/2"	1-3/4"	3-3/4"
5-315-025	1/2"	1/2"	2"	4"
5-315-034	5/8"	1/2"	2-1/2"	4-5/8"
5-315-040	3/4"	3/4"	3"	5-1/4"

CORTADOR VERT. 4 FILOS PLANO EXTRA LARGO

Código	Diá. de Corte	Diá. de Zanco	Largo de Corte	Largo Total
5-425-005	1/4"	3/8"	1-3/4"	3-9/16"
5-425-010	5/16"	3/8"	2"	3-3/4"
5-425-015	3/8"	3/8"	2-1/2"	4-1/4"
5-425-020	1/2"	1/2"	3"	5"
5-425-025	5/8"	1/2"	4"	6-1/8"
5-425-040	3/4"	3/4"	4"	6-1/4"
5-425-045	7/8"	7/8"	5"	7-1/4"
5-425-050	1"	1"	6"	8-1/2"



CORTADOR VERTICAL 2 F. PUNTA DE BOLA

Código	Diá. de Corte	Diá. de Zanco	Largo de Corte	Largo Total
5-220-005	1/8"	3/8"	3/8"	2-5/16"
5-220-010	3/16"	3/8"	1/2"	2-3/8"
5-220-015	1/4"	3/8"	5/8"	2-7/16"
5-220-020	5/16"	3/8"	3/4"	2-1/2"
5-220-025	3/8"	3/8"	3/4"	2-1/2"
5-220-035	1/2"	1/2"	1"	3"
5-220-040	9/16"	1/2"	1"	3"
5-220-050	5/8"	5/8"	1-3/8"	3-1/2"
5-220-055	3/4"	3/4"	1-5/8"	3-7/8"
5-220-060	7/8"	7/8"	2"	4-1/4"
5-220-080	1"	1"	2-1/4"	4-3/4"



CORTADOR VERTICAL 4 F. PUNTA DE BOLA

Código	Diá. de Corte	Diá. de Zanco	Largo de Corte	Largo Total
5-225-003	1/8"	3/8"	3/8"	2-5/16"
5-225-005	3/16"	3/8"	1/2"	2-3/8"
5-225-010	1/4"	3/8"	5/8"	2-7/16"
5-225-012	5/16"	3/8"	3/4"	2-1/2"
5-225-015	3/8"	3/8"	3/4"	2-1/2"
5-225-018	7/16"	1/2"	1-1/4"	3-1/4"
5-225-020	1/2"	1/2"	1-1/4"	3-1/4"
5-225-025	5/8"	5/8"	1-5/8"	3-3/4"
5-225-030	3/4"	3/4"	1-5/8"	3-7/8"
5-225-040	1"	1"	2"	4-1/2"



CORTADOR VERTICAL 4 F. MILIMÉTRICO

Código	Diá. de Corte	Diá. de Zanco	Largo de Corte	Largo Total
5-307-003	3 mm	3/8"	3/8"	2-5/16"
5-307-004	4 mm	3/8"	1/2"	2-3/8"
5-307-005	5 mm	3/8"	9/16"	2-1/2"
5-307-006	6 mm	3/8"	5/8"	2-1/2"
5-307-007	7 mm	3/8"	3/4"	2-1/2"
5-307-008	8 mm	3/8"	3/4"	2-1/2"
5-307-009	9 mm	3/8"	3/4"	2-1/2"
5-307-010	10 mm	3/8"	1"	2-11/16"
5-307-011	11 mm	3/8"	1"	2-11/16"
5-307-012	12 mm	3/8"	1"	2-11/16"
5-307-113	13 mm	1/2"	1-1/4"	3-1/4"
5-307-114	14 mm	1/2"	1-1/4"	3-1/4"
5-307-115	15 mm	1/2"	1-3/8"	3-3/8"
5-307-216	16 mm	5/8"	1-5/8"	3-3/4"
5-307-319	19 mm	3/4"	1-5/8"	3-3/4"



CORTADOR DE DESBASTE 8% COBALTO M42

Código	Diámetro	Diá. Zanco	Largo Filo	Largo total
5-431-005	1/4	3/8	5/8	2.7/16
5-431-010	5/16	3/8	3/4	2.1/2
5-431-015	3/8	3/8	3/4	2.1/2
5-431-025	1/2	1/2	2	4
5-431-030	5/8	5/8	1.5/8	3.3/4
5-431-040	3/4	3/4	1.5/8	3.3/4
5-431-050	3/4	3/4	3	5.1/4
5-431-055	7/8	3/4	1.7/8	4.1/8
5-431-065	1"	1"	2"	4.1/2



CORTADOR COLA MILANO A.V.

Código	Diámetro	Diá. Zanco	Largo Filo	Largo total
5-721-005	1/2	5/32	3/8	45°
5-721-010	3/4	1/4	3/8	45°
5-721-015	1.3/8	7/16	5/8	45°
5-721-030	1/2	1/4	3/8	60°
5-721-035	3/4	5/16	3/8	60°
5-721-040	1.3/8	9/16	5/8	60°





MACHUELO A.V.

TMX



MACHUELO FRACCIONAL A.V. SEMICÓNICO

Código	Medida Machuelo	Hilos por Plg.	H Limite	Largo Total
5-750-0027	1/4	20	H3	2-1/2"
5-750-0043	1/4	28	H3	2-1/2"
5-750-0065	5/16	18	H3	2-23/32"
5-750-0081	5/16	24	H3	2-23/32"
5-750-0100	3/8	16	H3	2-15/16"
5-750-0122	3/8	24	H3	2-15/16"
5-750-0141	7/16	14	H3	3-5/32"
5-750-0157	7/16	20	H3	3-5/32"
5-750-0182	1/2	13	H3	3-3/8"
5-750-0204	1/2	20	H3	3-3/8"
5-750-0223	9/16	12	H3	3-19/32"
5-750-0239	9/16	18	H3	3-19/32"
5-750-0264	5/8	11	H3	3-13/16"
5-750-0293	5/8	18	H3	3-13/16"
5-750-0340	11/16	11	H3	4-1/32"
5-750-0384	3/4	10	H3	4-1/4"
5-750-0406	3/4	16	H3	4-1/4"
5-750-0432	7/8	9	H4	4-11/16"
5-750-0472	7/8	14	H4	4-11/16"
5-750-0500	1	8	H4	5-1/8"
5-750-0540	1	12	H4	5-1/8"
5-750-0562	1	14	H4	5-1/8"



MACHUELO NUMÉRICO A.V. SEMICÓNICO

Código	Medida Machuelo	Hilos por Plg.	H Limite	Largo Total
5-752-0246	5	40	H2	1-15/16"
5-752-0306	6	32	H3	2"
5-752-0348	8	32	H3	2-1/8"
5-752-0408	10	24	H3	2-3/8"
5-752-0426	10	32	H3	2-3/8"

MACHUELO MILIMÉTRICO A.V. SEMICÓNICO

Código	Tamaño Machuelo mm	Paso mm
5-775-042	M3	.50
5-775-057	M4	.70
5-775-072	M5	.80
5-775-092	M6	1
5-775-112	M8	1.25
5-775-117	M8	1
5-775-127	M10	1.5
5-775-132	M10	1.25
5-775-137	M10	1
5-775-142	M11	1.5
5-775-147	M12	1.75
5-775-152	M12	1.5
5-775-157	M12	1.25
5-775-1601	M12	1
5-775-162	M14	2
5-775-167	M14	1.5
5-775-172	M14	1.25
5-775-1751	M14	1
5-775-177	M16	2
5-775-182	M16	1.5
5-775-1851	M16	1
5-775-187	M18	2.5
5-775-192	M18	2
5-775-197	M18	1
5-775-202	M18	1.5
5-775-207	M20	2.5
5-775-212	M20	1.5
5-775-217	M20	1
5-775-222	M20	2
5-775-227	M22	2.5
5-775-232	M22	1.5
5-775-2351	M22	1
5-775-237	M24	3
5-775-242	M24	2
5-775-247	M24	1.5



JUEGO MACHUELOS FRACC. NC Y NF				
Código	Medida Machuelo	Hilos por Plg.	H Limite	Largo Total
5-750-0029	1/4	20	H3	2-1/2"
5-750-0045	1/4	28	H3	2-1/2"
5-750-0067	5/16	18	H3	2-23/32"
5-750-0083	5/16	24	H3	2-23/32"
5-750-0102	3/8	16	H3	2-15/16"
5-750-0124	3/8	24	H3	2-15/16"
5-750-0143	7/16	14	H3	3-5/32"
5-750-0159	7/16	20	H3	3-5/32"
5-750-0184	1/2	13	H3	3-3/8"
5-750-0206	1/2	20	H3	3-3/8"
5-750-0266	5/8	11	H3	3-13/16"
5-750-0386	3/4	10	H3	4-1/4"

JUEGO MACHUELOS MILIMÉTRICOS		
Código	Medida Machuelo	Hilos por Plg.
5-775-044	M3	0.5
5-775-059	M4	0.7
5-775-074	M5	0.8
5-775-094	M6	1
5-775-114	M8	1.25
5-775-129	M10	1.5
5-775-149	M12	1.75



MACHUELO FRACCIONAL A.V. TIPO GUN				
Código	Medida Machuelo	Hilos por Plg.	H Limite	Largo Total
5-770-058	1/4	20	H3	2-1/2"
5-770-074	1/4	28	H2	2-1/2"
5-770-100	5/16	18	H3	2-23/32"
5-770-138	3/8	16	H3	2-5/16"
5-770-153	3/8	24	H3	2-5/16"
5-770-191	1/2	13	H3	3-3/8"
5-770-205	1/2	20	H3	3-3/8"
5-770-220	9/16	12	H3	3-19/32"
5-770-225	9/16	18	H5	3-19/32"
5-770-245	5/8	11	H3	3-13/16"
5-770-257	5/8	18	H3	3-13/16"
5-770-271	3/4	10	H3	4-1/4"
5-770-283	3/4	16	H3	4-1/4"

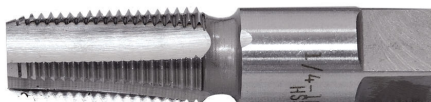
MACHUELO NUMÉRICO A.V. TIPO GUN				
Código	Medida Machuelo	Hilos por Plg.	H Limite	Largo Total
5-772-138	5	40	H2	1-15/16"
5-772-165	6	32	H3	2"
5-772-190	8	32	H3	2-1/8"
5-772-215	10	24	H3	2-3/8"
5-772-226	10	32	H3	2-3/8"

MACHUELO MILIMÉTRICO A.V. TIPO GUN		
Código	Medida Machuelo	Hilos por Plg.
5-776-006	M3	.50
5-776-008	M4	.70
5-776-010	M5	.80
5-776-011	M6	1.0
5-776-014	M8	1.25
5-776-016	M10	1.50
5-776-018	M12	1.75



MACHUELO NPT / NPS / IZQUIERDO

TMX



MACHUELO PARA TUBO NPT Y NPS

Código NPT	Código NPS	Medida Machuelo	Hilos por Plg.	Nº de Filos	Largo de Rosca	Largo Total
5-764-001	5-765-001	1/16	27	4	11/16"	2-1/8"
5-764-002	5-765-002	1/8	27	4	3/4"	2-1/8"
5-764-003	5-765-003	1/4	18	4	1-1/16"	2-7/16"
5-764-004	5-765-004	3/8	18	4	1-1/16"	2-9/16"
5-764-005	5-765-005	1/2	14	4	1-3/8"	3-1/8"
5-764-006	5-765-006	3/4	14	5	1-3/8"	3-1/4"
5-764-007	5-765-007	1	11-1/2	5	1-3/4"	3-3/4"
5-764-008	5-765-008	1-1/4	11-1/2	5	1-3/4"	4"
5-764-009	5-765-009	1-1/2	11-1/2	7	1-3/4"	4-1/4"
5-764-010	5-765-010	2	11-1/2	7	1-3/4"	4-1/2"



MACHUELO FRACCIONAL A.V. IZQUIERDO

Código	Medida Machuelo	Hilos por Plg.	Límite H	Largo Total
5-756-0027	1/4	20	H3	2-1/2"
5-756-0043	1/4	28	H3	2-1/2"
5-756-0065	5/16	18	H3	2-23/32"
5-756-0081	5/16	24	H3	2-23/32"
5-756-0100	3/8	16	H3	2-15/16"
5-756-0122	3/8	24	H3	2-15/16"
5-756-0141	7/16	14	H3	3-5/32"
5-756-0157	7/16	20	H3	3-5/32"
5-756-0189	1/2	13	H3	3-3/8"
5-756-0204	1/2	20	H3	3-3/8"
5-756-0223	9/16	12	H3	3-19/32"
5-756-0239	9/16	18	H3	3-19/32"
5-756-0263	5/8	11	H3	3-13/16"
5-756-0292	5/8	18	H3	3-13/16"
5-756-0384	3/4	10	H3	4-1/4"
5-756-0406	3/4	16	H3	4-1/4"
5-756-0428	7/8	9	H3	4-11/16"
5-756-0468	7/8	14	H3	4-11/16"
5-756-0500	1-8	8	H4	5-1/8"



DADO TARRAJA FRACCIONAL 1" Ø NC		
Código	Medida	Hilos por Plg.
5-800-034	5	40
5-800-035	6	32
5-800-040	8	32
5-800-045	10	24
5-800-050	12	24
5-800-055	1/4	20
5-800-060	5/16	18
5-800-065	3/8	16
5-800-070	7/16	14
5-800-075	1/2	13

DADO TARRAJA FRACCIONAL 1" Ø NF		
Código	Medida	Hilos por Plg.
5-805-035	6	40
5-805-040	8	36
5-805-045	10	32
5-805-050	12	28
5-805-055	1/4	28
5-805-060	5/16	24
5-805-065	3/8	24
5-805-070	7/16	20
5-805-075	1/2	20

DADO TARRAJA FRACCIONAL 1 1/2" Ø NC		
Código	Medida	Hilos por Plg.
5-800-080	1/4	20
5-800-085	5/16	18
5-800-090	3/8	16
5-800-095	7/16	14
5-800-100	1/2	13
5-800-105	9/16	12
5-800-110	5/8	11
5-800-115	3/4	10

DADO TARRAJA FRACCIONAL 1 1/2" Ø NF		
Código	Medida	Hilos por Plg.
5-805-080	1/4	28
5-805-085	5/16	24
5-805-090	3/8	24
5-805-095	7/16	20
5-805-100	1/2	20
5-805-105	9/16	18
5-805-110	5/8	18
5-805-115	3/4	16

DADO TARRAJA FRACCIONAL 2" Ø NC		
Código	Medida	Hilos por Plg.
5-800-125	3/4	10
5-800-130	7/8	9
5-800-135	1	8

DADO TARRAJA FRACCIONAL 2" Ø NF		
Código	Medida	Hilos por Plg.
5-805-130	7/8	14
5-805-134	1	12
5-805-135	1	14



DADO TARRAJA

TMX



DADO TARRAJA 1 1/2" Ø NPT

Código	Medida	Hilos por Plg.
5-816-015	1/8	27
5-816-020	1/4	18
5-816-025	3/8	18

DADO TARRAJA 2" Ø NPT

Código	Medida	Hilos por Plg.
5-816-040	1/2	14
5-816-045	3/4	14

DADO TARRAJA 1 1/2" Ø NPS

Código	Medida	Hilos por Plg.
5-815-015	1/8	27
5-815-020	1/4	18
5-815-025	3/8	18

DADO TARRAJA 2 1/2" Ø NPT

Código	Medida	Hilos por Plg.
5-816-050	1	11-1/2

DADO TARRAJA 2" Ø NPS

Código	Medida	Hilos por Plg.
5-815-040	1/2"	14

DADO TARRAJA 1 1/2" Ø MM

Código	Medida mm	Hilos por Plg.
5-801-320	M10	1.50
5-801-345	M12	1.75
5-806-345	M12	1.5
5-806-350	M12	1.25
5-801-360	M14	2
5-806-360	M14	1.5
5-806-365	M14	1.25
5-806-370	M14	1
5-801-385	M16	2
5-806-385	M16	1.5
5-806-390	M16	1
5-801-405	M18	2.5
5-801-415	M20	2.5
5-806-425	M20	1.5
5-806-427	M20	1

DADO TARRAJA 1" Ø MM

Código	Medida mm	Hilos por Plg.
5-801-190	M3	.5
5-801-205	M4	.7
5-801-215	M5	.8
5-801-225	M6	1
5-801-235	M8	1.25
5-806-235	M8	1
5-801-238	M9	1.25
5-801-240	M10	1.50
5-806-240	M10	1.25
5-806-241	M10	1
5-801-245	M11	1
5-806-260	M12	1

DADO TARRAJA 2" Ø MM

Código	Medida mm	Paso mm
5-801-520	M24	3

DADO TARRAJA



TMX

DADO TARRAJA 1" Ø NC IZQUIERDO

Código	Medida	Hilos por Plg.
5-808-098	1/4	20
5-808-112	5/16	18
5-808-129	3/8	16
5-808-142	7/16	14
5-808-148	1/2	13

DADO TARRAJA 1" Ø NF IZQUIERDO

Código	Medida mm	Hilos por Plg.
5-808-100	1/4	28
5-808-115	5/16	24
5-808-136	3/8	24
5-808-146	7/16	20
5-808-150	1/2	20

DADO TARRAJA 1 1/2" Ø NC IZQUIERDO

Código	Medida mm	Hilos por Plg.
5-808-352	5/8	11
5-808-452	3/4	10

DADO TARRAJA 1 1/2" Ø NF IZQUIERDO

Código	Medida mm	Hilos por Plg.
5-808-361	5/8	18
5-808-456	3/4	16

DADO TARRAJA 2" Ø NC IZQUIERDO

Código	Medida mm	Hilos por Plg.
5-808-505	7/8	9
5-808-522	1	8

DADO TARRAJA 2" Ø NF IZQUIERDO

Código	Medida mm	Hilos por Plg.
5-808-508	7/8	14
5-808-525	1	12
5-808-529	1	14



MANERAL PARA DADO

Código	Diá. Dado Pulgada	Largo Total Pulgada
4-400-020	2	19-1/2



DADO TARRAJA / CORTADOR WOODRUFF

TMX



DADO TARRAJA 1" Ø MM IZQUIERDO

Código	Medida	Hilos por Plg.
5-809-100	M4	.7
5-809-110	M5	.8
5-809-120	M6	1
5-809-140	M8	1.25
5-809-160	M10	1
5-809-165	M10	1.25
5-809-170	M10	1.5
5-809-190	M12	1
5-809-195	M12	1.25
5-809-200	M12	1.5
5-809-205	M12	1.75

DADO TARRAJA 1 1/2" Ø MM IZQUIERDO

Código	Medida	Hilos por Plg.
5-809-300	M14	1
5-809-305	M14	1.25
5-809-310	M14	1.5
5-809-315	M14	2
5-809-325	M16	1
5-809-330	M16	1.5
5-809-335	M16	2
5-809-345	M18	1.5
5-809-350	M18	2.5
5-809-355	M20	1.5
5-809-365	M20	1.5
5-809-370	M20	2
5-809-375	M20	2.5

CORTADOR WOODRUFF

Código	Diámetro	Ancho Cortador
5-727-0005	1/4"	1/16"
5-727-0006	5/16"	1/16"
5-727-001	5/16"	3/32"
5-727-002	3/8"	1/16"
5-727-003	3/8"	3/32"
5-727-004	3/8"	1/8"
5-727-005	1/2"	1/16"
5-727-010	1/2"	3/32"
5-727-015	5/8"	3/32"
5-727-020	1/2"	1/8"
5-727-025	5/8"	1/8"
5-727-030	3/4"	1/8"
5-727-035	5/8"	5/32"
5-727-040	5/8"	3/16"
5-727-045	3/4"	5/32"
5-727-050	3/4"	1/4"
5-727-055	7/8"	5/32"
5-727-060	3/4"	3/16"
5-727-065	7/8"	3/16"
5-727-070	7/8"	7/32"
5-727-075	1"	3/16"
5-727-080	1"	7/32"
5-727-085	1"	3/8"
5-727-090	1.1/8"	3/16"
5-727-095	7/8"	1/4"
5-727-100	1"	1/4"
5-727-105	1.1/8"	7/32"
5-727-110	1.1/8"	1/4"
5-727-115	1.1/4"	3/16"
5-727-120	1.1/4"	7/32"
5-727-125	1.1/4"	1/4"
5-727-130	1.3/8"	1/4"
5-727-135	1.1/2"	1/4"
5-727-140	1"	5/16"
5-727-145	1.1/8"	5/16"
5-727-150	1.1/4"	5/16"
5-727-155	1.3/8"	5/16"
5-727-160	1.1/2"	5/16"
5-727-165	1.1/4"	3/8"
5-727-170	1.3/8"	3/8"
5-727-175	1.1/2"	3/8"



AVELLANADORES 3 FILOS A.V.

Diámetro	Diámetro zanco	Código 60°	Código 82°	Código 90°
1/4	3/16	5-656-6005	5-656-8205	5-656-9005
3/8	1/4	5-656-6010	5-656-8210	5-656-9010
1/2	3/8	5-656-6015	5-656-8215	5-656-9015
5/8	3/8	5-656-6020	5-656-8220	5-656-9020
3/4	1/2	5-656-6025	5-656-8225	5-656-9025
1"	1/2	5-656-6030	5-656-8230	5-656-9030
1.1/2	3/4	5-656-6040	5-656-8240	5-656-9040



CORTADOR ANULAR A.V.

Diámetro	Código 1" prof	Código 2" prof	Diámetro int	No. de filos
1/2	5-530-111	5-530-211	.264	4
5/8	5-530-116	5-530-216	.284	4
3/4	5-530-121	5-530-221	.370	5
7/8	5-530-127	5-530-227	.488	6
1	5-530-133	5-530-233	.606	6
1.1/8	5-530-139	5-530-239	.709	8
1.1/4	5-530-145	5-530-245	.835	8
1.3/8	5-530-151	5-530-251	.957	8
1.1/2	5-530-157	5-530-257	1.083	9



CORTADOR CIRCULAR 3 CORTES DIENTE CONTINUO

Código	Diámetro	Espesor	Dia hueco	Dientes
5-748-222	2.1/2	1/16	1	28
5-748-234	2.1/2	1/8	1	28
5-748-252	3	1/16	1	32
5-748-264	3	1/8	1	32
5-748-276	3	3/16	1	32
5-748-290	4	1/16	1	36
5-748-306	4	1/8	1	36
5-748-322	4	3/16	1	36
5-748-340	5	1/16	1	40
5-748-352	5	1/8	1	40
5-748-368	5	3/16	1	40
5-748-386	5	1/4	1	40
5-748-412	6	3/16	1	42
5-748-432	6	1/4	1	42



CORTADOR PARA ENGRANE



PASO DIAMETRAL ÁNGULO 14.1/2°			
Código	Diámetro Interiores	Diámetro Cortador	Paso Diametral
5-860-029	1.1/4"	4-3/4"	3 #5
5-860-044	1.1/4"	4-1/4"	4 #4
5-860-076	1.1/4"	3-1/2"	6 #4
5-860-078	1.1/4"	3-1/2"	6 #6
5-860-113	1"	2-7/8"	8 #1
5-860-114	1"	2-7/8"	8 #2
5-860-115	1"	2-7/8"	8 #3
5-860-116	1"	2-7/8"	8 #4
5-860-117	1"	2-7/8"	8 #5
5-860-118	1"	2-7/8"	8 #6
5-860-119	1"	2-7/8"	8 #7
5-860-120	1"	2-7/8"	8 #8
5-860-146	7/8"	2-3/8"	10 #2
5-860-154	1"	2-5/8"	11 #2
5-860-169	1"	2-5/8"	12 #1
5-860-170	1"	2-5/8"	12 #2
5-860-171	1"	2-5/8"	12 #3
5-860-172	1"	2-5/8"	12 #4
5-860-173	1"	2-5/8"	12 #5
5-860-174	1"	2-5/8"	12 #6
5-860-175	1"	2-5/8"	12 #7
5-860-176	1"	2-5/8"	12 #8
5-860-185	1"	2-1/2"	14 #1
5-860-186	1"	2-1/2"	14 #2
5-860-187	1"	2-1/2"	14 #3
5-860-188	1"	2-1/2"	14 #4
5-860-189	1"	2-1/2"	14 #5
5-860-190	1"	2-1/2"	14 #6
5-860-191	1"	2-1/2"	14 #7
5-860-192	1"	2-1/2"	14 #8
5-860-201	1"	2-1/2"	16 #1
5-860-202	1"	2-1/2"	16 #2
5-860-203	1"	2-1/2"	16 #3
5-860-204	1"	2-1/2"	16 #4
5-860-205	1"	2-1/2"	16 #5
5-860-206	1"	2-1/2"	16 #6
5-860-207	1"	2-1/2"	16 #7
5-860-208	1"	2-1/2"	16 #8

CORTADOR PARA ENGRANE



TMX

PASO MODULAR ANGULO 20°			
Código	Diámetro Interios	Diámetro Cortador	Paso Diametral
5-862-0101	16mm	50mm	1 #1
5-862-0102	16mm	50mm	1 #2
5-862-0103	16mm	50mm	1 #3
5-862-0104	16mm	50mm	1 #4
5-862-0105	16mm	50mm	1 #5
5-862-0106	16mm	50mm	1 #6
5-862-0107	16mm	50mm	1 #7
5-862-0108	16mm	50mm	1 #8
5-862-0121	16mm	50mm	1.25 #1
5-862-0122	16mm	50mm	1.25 #2
5-862-0123	16mm	50mm	1.25 #3
5-862-0124	16mm	50mm	1.25 #4
5-862-0125	16mm	50mm	1.25 #5
5-862-0126	16mm	50mm	1.25 #6
5-862-0127	16mm	50mm	1.25 #7
5-862-0128	16mm	50mm	1.25 #8
5-862-0151	22mm	56mm	1.5 #1
5-862-0152	22mm	56mm	1.5 #2
5-862-0153	22mm	56mm	1.5 #3
5-862-0154	22mm	56mm	1.5 #4
5-862-0155	22mm	56mm	1.5 #5
5-862-0156	22mm	56mm	1.5 #6
5-862-0157	22mm	56mm	1.5 #7
5-862-0158	22mm	56mm	1.5 #8
5-862-0171	22mm	56mm	1.75 #1
5-862-0172	22mm	56mm	1.75 #2
5-862-0173	22mm	56mm	1.75 #3
5-862-0174	22mm	56mm	1.75 #4
5-862-0175	22mm	56mm	1.75 #5
5-862-0176	22mm	56mm	1.75 #6
5-862-0177	22mm	56mm	1.75 #7
5-862-0178	22mm	56mm	1.75 #8
5-862-0201	22mm	63mm	2 #1
5-862-0202	22mm	63mm	2 #2
5-862-0203	22mm	63mm	2 #3
5-862-0204	22mm	63mm	2 #4
5-862-0205	22mm	63mm	2 #5
5-862-0206	22mm	63mm	2 #6
5-862-0207	22mm	63mm	2 #7
5-862-0208	22mm	63mm	2 #8

Código	Diámetro Interios	Diámetro Cortador	Paso Diametral
5-862-0221	22mm	63mm	2.25 #1
5-862-0222	22mm	63mm	2.25 #2
5-862-0223	22mm	63mm	2.25 #3
5-862-0224	22mm	63mm	2.25 #4
5-862-0225	22mm	63mm	2.25 #5
5-862-0226	22mm	63mm	2.25 #6
5-862-0227	22mm	63mm	2.25 #7
5-862-0228	22mm	63mm	2.25 #8
5-862-0251	22mm	63mm	2.5 #1
5-862-0252	22mm	63mm	2.5 #2
5-862-0253	22mm	63mm	2.5 #3
5-862-0254	22mm	63mm	2.5 #4
5-862-0255	22mm	63mm	2.5 #5
5-862-0256	22mm	63mm	2.5 #6
5-862-0257	22mm	63mm	2.5 #7
5-862-0258	22mm	63mm	2.5 #8
5-862-0271	27mm	71mm	2.75 #1
5-862-0272	27mm	71mm	2.75 #2
5-862-0273	27mm	71mm	2.75 #3
5-862-0274	27mm	71mm	2.75 #4
5-862-0275	27mm	71mm	2.75 #5
5-862-0276	27mm	71mm	2.75 #6
5-862-0277	27mm	71mm	2.75 #7
5-862-0278	27mm	71mm	2.75 #8
5-862-0301	27mm	71mm	3 #1
5-862-0302	27mm	71mm	3 #2
5-862-0303	27mm	71mm	3 #3
5-862-0304	27mm	71mm	3 #4
5-862-0305	27mm	71mm	3 #5
5-862-0306	27mm	71mm	3 #6
5-862-0307	27mm	71mm	3 #7
5-862-0308	27mm	71mm	3 #8

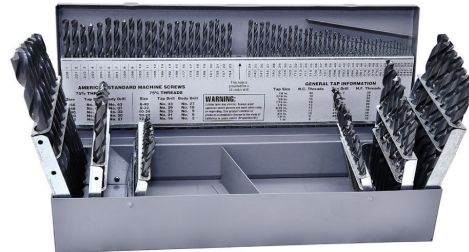


ESTUCHES DE BROCAS AV CON RECUBRIMIENTO TIN

TMX



BROCA A.V. FRACCIONAL CON RECUBRIMIENTO DE TIN CON PUNTA 118°				
Código	Medida	Equív. Decimal	Largo de Filo	Largo Total
5-131-0063	1/16"	0.0625	7/8"	1.7/8"
5-131-0078	5/64"	0.0781	1"	2"
5-131-0094	3/32"	0.0938	1.1/4"	2.1/4"
5-131-0109	7/64"	0.1094	1.1/2"	2.5/8"
5-131-0125	1/8"	0.1250	1.5/8"	2.3/4"
5-131-0141	9/64"	0.1406	1.3/4"	2.7/8"
5-131-0156	5/32"	0.1563	2"	3.1/8"
5-131-0172	11/64"	0.1719	2.1/8"	3.1/4"
5-131-0187	3/16"	0.1875	2.5/16"	3.1/2"
5-131-0203	13/64"	0.2031	2.7/16"	3.5/8"
5-131-0219	7/32"	0.2188	2.1/2"	3.3/4"
5-131-0250	1/4"	0.2500	2.3/4"	4"
5-131-0266	17/64"	0.2656	2.7/8"	4.1/8"
5-131-0281	9/32"	0.2813	2.15/16"	4.1/4"
5-131-0313	5/16"	0.3125	3.3/16"	4.1/2"
5-131-0359	23/64"	0.3594	3.1/2"	4.7/8"
5-131-0375	3/8"	0.3750	3.5/8"	5"
5-131-0391	25/64"	0.3906	3.3/4"	5.1/8"
5-131-0437	7/16"	0.4375	4.1/16"	5.1/2"
5-131-0500	1/2"	0.5000	4.1/2"	6"



JUEGOS DE BROCAS A.V. CON RECUBRIMIENTO DE TIN CON PUNTA 118°		
Código	Medida	Nº de Piezas
5-131-705	1/16"-1/2" EN 64VOS.	29
5-132-505	#1 HASTA #60	60
5-133-505	A HASTA Z	26
5-134-705	1.00MM A 13.00 MM POR .5	25

ESTUCHE DE BROCAS TRIPLEX A.V. SIN RECUBRIMIENTO		
Código	Medida	Nº de Piezas
5-199-005	1/16-1/2 EN 64VOS. #1-60, A-Z	115

CORTADORES DE CARBURO DE TUNGSTENO CON RECUBRIMIENTO TIALN



CORTADOR VERTICAL 4F PLANO CON REC TIALN				
Código	Diá. de Corte	Zanco	Largo de Corte	Largo Total
1-102-4006	1/16"	1/8"	3/16"	1.1/2"
1-102-4009	3/32"	1/8"	3/8"	1.1/2"
1-102-4012	1/8"	1/8"	1/2"	1.1/2"
1-102-4015	5/32"	3/16"	9/16"	2"
1-102-4018	3/16"	3/16"	5/8"	2"
1-102-4025	1/4"	1/4"	3/4"	2.1/2"
1-102-4031	5/16"	5/16"	13/16"	2.1/2"
1-102-4038	3/8"	3/8"	1"	2.1/2"
1-102-4044	7/16"	7/16"	1"	2.3/4"
1-102-4050	1/2"	1/2"	1"	3"
1-102-4062	5/8"	5/8"	1.1/4"	3.1/2"
1-102-4075	3/4"	3/4"	1.1/2"	4"
1-102-4100	1"	1"	1.1/2"	4"

CORTADOR VERTICAL 4F PLANO CON REC TIALN				
Código	Diá. Corte	zanco	Largo Corte	Largo Total
1-112-40122	1/8	1/8	3/4	2.1/4
1-112-40183	3/16	3/16	1.1/8	3"
1-112-40253	1/4	1/4	1.1/8	3"
1-112-40254	1/4	1/4	1.1/2	4"
1-112-40313	5/16	5/16	1.1/8	3"
1-112-40314	5/16	5/16	1.5/8	4"
1-112-40374	3/8	3/8	1.3/4	4"
1-112-40376	3/8	3/8	1.1/2	6"
1-112-40434	7/16	7/16	2"	4"
1-112-40502	1/2	1/2	2"	4"
1-112-405061	1/2	1/2	1.1/2	6"
1-112-4062	5/8	5/8	2.1/4	5"
1-112-40626	5/8	5/8	3"	6"
1-112-40756	1/4	1/4	3"	6"
1-112-41006	1"	1"	3"	6"



CORTADOR VERTICAL 4F BOLA CON REC TIALN				
Código	Diá. de Corte	Zanco	Largo de Corte	Largo Total
1-104-4006	1/16"	1/8"	3/16"	1.1/2"
1-104-4012	1/8"	1/8"	1/2"	1.1/2"
1-104-4018	3/16"	3/16"	5/8"	2"
1-104-4025	1/4"	1/4"	3/4"	2.1/2"
1-104-4031	5/16"	5/16"	13/16"	2.1/2"
1-104-4038	3/8"	3/8"	1"	2.1/2"
1-104-4050	1/2"	1/2"	1"	3"
1-104-4062	5/8"	5/8"	1.1/4"	3.1/2"



CORTADOR VERTICAL 2F PLANO CON REC TIALN				
Código	Diá. de Corte	Zanco	Largo de Corte	Largo Total
1-102-2006	1/16"	1/8"	3/16"	1.1/2"
1-102-2012	1/8"	1/8"	1/2"	1.1/2"
1-102-2018	3/16"	3/16"	5/8"	2"
1-102-2025	1/4"	1/4"	3/4"	2.1/2"
1-102-2031	5/16"	5/16"	13/16"	2.1/2"
1-102-2038	3/8"	3/8"	1"	2.1/2"
1-102-2044	7/16"	7/16"	1"	2.3/4"
1-102-2050	1/2"	1/2"	1"	3"
1-102-2062	5/8"	2"	1.1/4"	3.1/2"
1-102-2075	3/4"	3/4"	1.1/2"	4"
1-102-2100	1"	1"	1.1/2"	4"



CORTADORES DE CARBURO DE TUNGSTENO CON RECUBRIMIENTO TIALN

TMX



CORTADOR VERTICAL 2F BOLA CON REC TIALN

Código	Diá. de Corte	Zanco	Largo de Corte	Largo Total
1-104-2006	1/16"	1/8"	3/16"	1.1/2"
1-104-2012	1/8"	1/8"	1/2"	1.1/2"
1-104-2018	3/16"	3/16"	5/8"	2"
1-104-2025	1/4"	1/4"	3/4"	2.1/2"
1-104-2031	5/16"	5/16"	13/16"	2.1/2"
1-104-2038	3/8"	3/8"	1"	2.1/2"
1-104-2044	7/16"	7/16"	1"	2.3/4"
1-104-2050	1/2"	1/2"	1"	3"
1-104-2062	5/8"	5/8"	1.1/4"	3.1/2"
1-104-2075	3/4"	3/4"	1.1/2"	4"
1-104-2100	1"	1"	1.1/2"	4"

CORTADOR VERTICAL 4F PLANO MM CON REC TIALN

Código	Diá. de Corte mm	Zanco mm	Largo de Corte mm	Largo Total mm
1-182-4002	2	3	6.3	38
1-182-4003	3	3	12	38
1-182-4004	4	4	14	50
1-182-4005	5	6	16	50
1-182-4006	6	6	19	50
1-182-4008	8	8	20	63
1-182-4010	10	10	22	75
1-182-4012	12	12	25	75
1-182-4014	14	14	32	89
1-182-4016	16	16	32	89



BROCA FRACCIONAL DE CARBURO SOLIDO

Código	Diá. de Broca	Equiv. Decimal	Largo de Corte	Largo Total
1-200-0063	1/16"	.0625	3/4"	1.1/2"
1-200-0094	3/32"	.0938	1"	2"
1-200-0109	7/64"	.1094	1.1/4"	2.1/4"
1-200-0125	1/8"	.1250	1.1/4"	2.1/4"
1-200-0141	9/64"	.1406	1.3/8"	2.1/2"
1-200-0156	5/32"	.1562	1.3/8"	2.1/2"
1-200-0172	11/64"	.1719	1.5/8"	2.3/4"
1-200-0187	3/16"	.1875	1.5/8"	2.3/4"
1-200-0203	13/64"	.2031	1.3/4"	3"
1-200-0234	15/64"	.2344	2"	3.1/4"
1-201-005	1/4"	.2500	2"	3.1/4"
1-200-0313	5/16"	.3125	2.3/8"	3.3/4"
1-200-0375	3/8"	.3750	2.3/4"	4.1/4"
1-200-0437	7/16"	.4375	2.7/8"	4.1/2"
1-200-0500	1/2"	.5000	3"	4.3/4"

BROCA MM DE CARBURO SOLIDO

Código	Diá. de Corte mm	Equiv. Decimal mm	Largo de Corte mm	Largo Total mm
1-200-0039	1	.0393	12	34
1-200-0059	1.5	.0591	18	40
1-200-0079	2	.0787	24	49
1-200-0099	2.5	.0984	30	57
1-200-0118	3	.1181	33	61
1-200-0138	3.5	.1378	39	70
1-200-0158	4	.1575	43	75
1-200-0177	4.5	.1772	47	80
1-200-0197	5	.1968	52	86
1-200-0217	5.5	.2165	57	93
1-200-0236	6	.2362	57	93
1-200-0256	6.5	.2559	63	101
1-200-0276	7	.2756	69	109
1-200-0295	7.5	.2953	69	109
1-200-0315	8	.3150	75	117
1-200-0335	8.5	.3346	75	117
1-200-0354	9	.3543	81	125
1-200-0374	9.5	.3740	81	125
1-200-0394	10	.3937	87	133
1-200-0413	10.5	.4134	87	133
1-200-0433	11	.4331	94	142
1-200-0452	11.5	.4528	94	142
1-200-0472	12	.4724	101	151